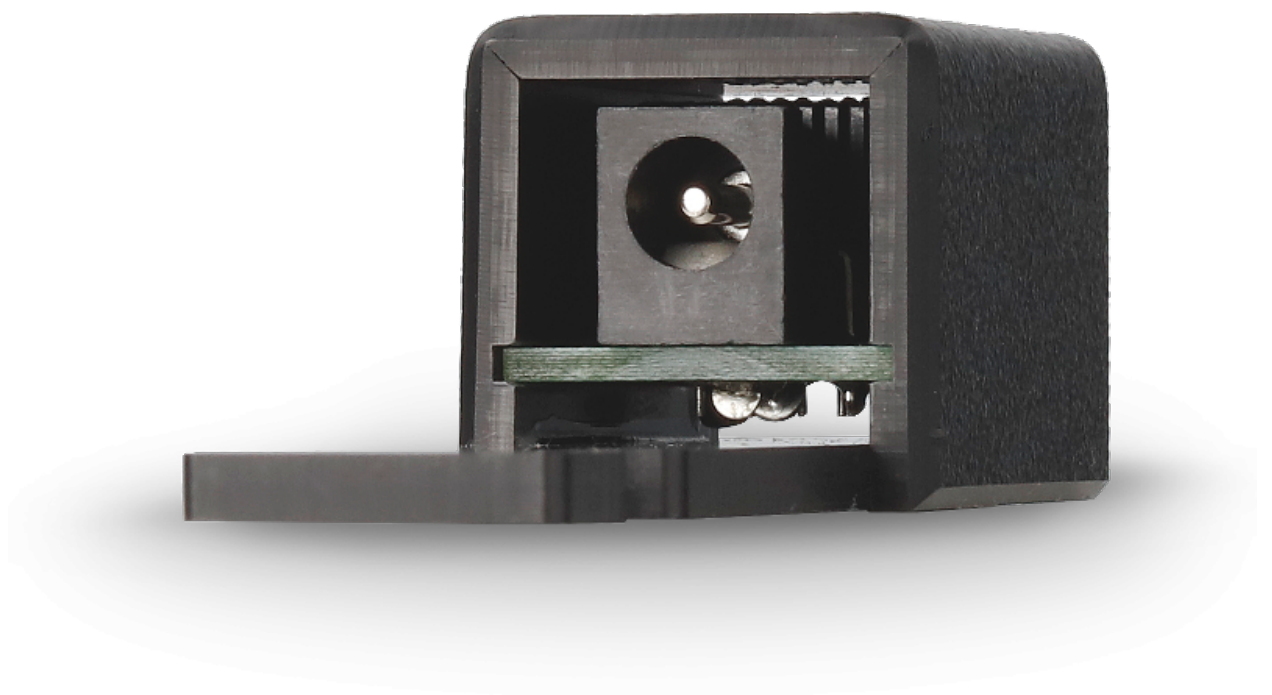


Power adapter for connecting a MultiSensor – MANUAL



Legacy product

This product is no longer available. The documentation is still available as an archive.

ORDER-CODES:
KIO2

Overview

The Kentix I/O power adapter KIO2 is used to connect a MultiSensor-RF/-LAN/-LAN-RF to the power supply.

Safety instructions

Installation

Installation and commissioning may only be carried out by trained specialist personnel in accordance with the instructions.

No modifications of any kind, other than those described in an appropriate manual, are permitted to Kentix GmbH products.

Certain levels of protection must be provided when installing Kentix equipment.

Observe the relevant regulations for installations in the respective environment.

Only operate the products within the defined temperature range.

The instructions should be passed on to the user by the person carrying out the installation.

Kentix accepts no liability for damage to the equipment or components resulting from incorrect installation. No liability is accepted for incorrectly programmed units.

Kentix shall not be liable in the event of malfunctions, damage to property or other damage.

Use of the products, transport and storage

Protect the device during transport, storage and operation from

Protect moisture, dirt and damage.

Battery powered products

Do not use products in potentially explosive atmospheres.

Only operate the products within the defined temperature range.

Installation and battery replacement may only be carried out by trained personnel in accordance with the instructions.

Do not charge, short circuit, open or heat batteries.

When inserting the batteries, pay attention to the correct polarity.

The devices must always be operated with the batteries intended for the product.

When changing batteries, always replace all batteries.

Dispose of old or used batteries properly.

Keep batteries out of the reach of children.

Maintenance

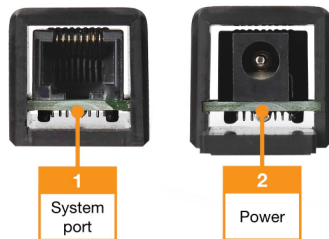
Kentix devices must be checked for functionality as part of annual maintenance.

Disposal

Electrical appliances and batteries must be disposed of separately from household waste.

Controls

Connections



KIO2 Connectors front view



KIO2 Connectors side view

1. Kentix system port: For connecting a Kentix MultiSensor
2. Plug-in power supply socket

Commissioning

The adapter is connected directly to the Kentix system socket (1) and offers the option of supplying power to a MultiSensor via a plug-in power supply (2). This may be necessary, for example, if no PoE switch is available for operating a MultiSensor-LAN/-LAN-RF, or if a MultiSensor-RF is to be connected separately to monitor the external power supply. The cable length between MultiSensor and KIO2 adapter should not exceed 50 meters.

This adapter is only used to supply power to a MultiSensor.

The alarm inputs and outputs on the MultiSensor are no longer available when using this adapter.

Configuration with KentixONE

The device is configured via the web browser in KentixONE. The device must be accessible to the central KentixONE instance on the network side. Depending on the device type, a communication key and the IP address or DHCP name of the central KentixONE instance must also be set on the device (MultiSensors, AccessManager, SmartPDU). IP cameras or IO modules, on the other hand, can be integrated directly into KentixONE.

All information about the software can be found in the [KentixONE](#) section and the associated documentation.

Before starting the configuration, make sure that the software on all network-compatible Kentix devices is up-to-date. The version status must match on all devices.

You can perform a software update for your KentixONE main instance and all connected satellites at any time via “System - Update”.