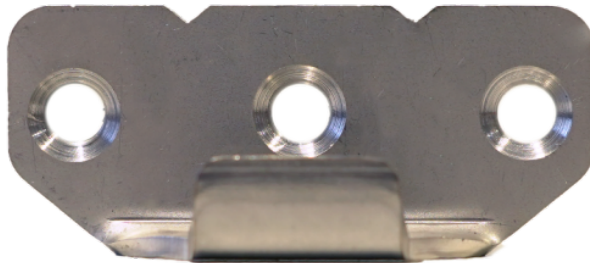


# DoorLock-RA4-STENGEL-1 - MANUAL



ORDER-CODES:  
KXC-RA4-STENGEL-1

[DATASHEET KXC-RA4](#)

## Overview

DoorLock-RA4-STENGEL-1 is a conversion kit for Stengel IT racks to make them compatible with the DoorLock-RA4 locking solution. The set consists of 4 lock holders, which replace the lock holders fitted as standard. One set is required per door.

## Safety instructions

### Installation

Installation and commissioning may only be carried out by trained specialist personnel in accordance with the instructions.

No modifications of any kind, other than those described in an appropriate manual, are permitted to Kentix GmbH products.

Certain levels of protection must be provided when installing Kentix equipment.

Observe the relevant regulations for installations in the respective environment.

Only operate the products within the defined temperature range.

The instructions should be passed on to the user by the person carrying out the installation.

Kentix accepts no liability for damage to the equipment or components resulting from incorrect installation. No liability is accepted for incorrectly programmed units.

Kentix shall not be liable in the event of malfunctions, damage to property or other damage.

Use of the products, transport and storage

Protect the device during transport, storage and operation from

Protect moisture, dirt and damage.

Battery powered products

Do not use products in potentially explosive atmospheres.

Only operate the products within the defined temperature range.

Installation and battery replacement may only be carried out by trained personnel in accordance with the instructions.

Do not charge, short circuit, open or heat batteries.

When inserting the batteries, pay attention to the correct polarity.

The devices must always be operated with the batteries intended for the product.

When changing batteries, always replace all batteries.

Dispose of old or used batteries properly.

Keep batteries out of the reach of children.

Maintenance

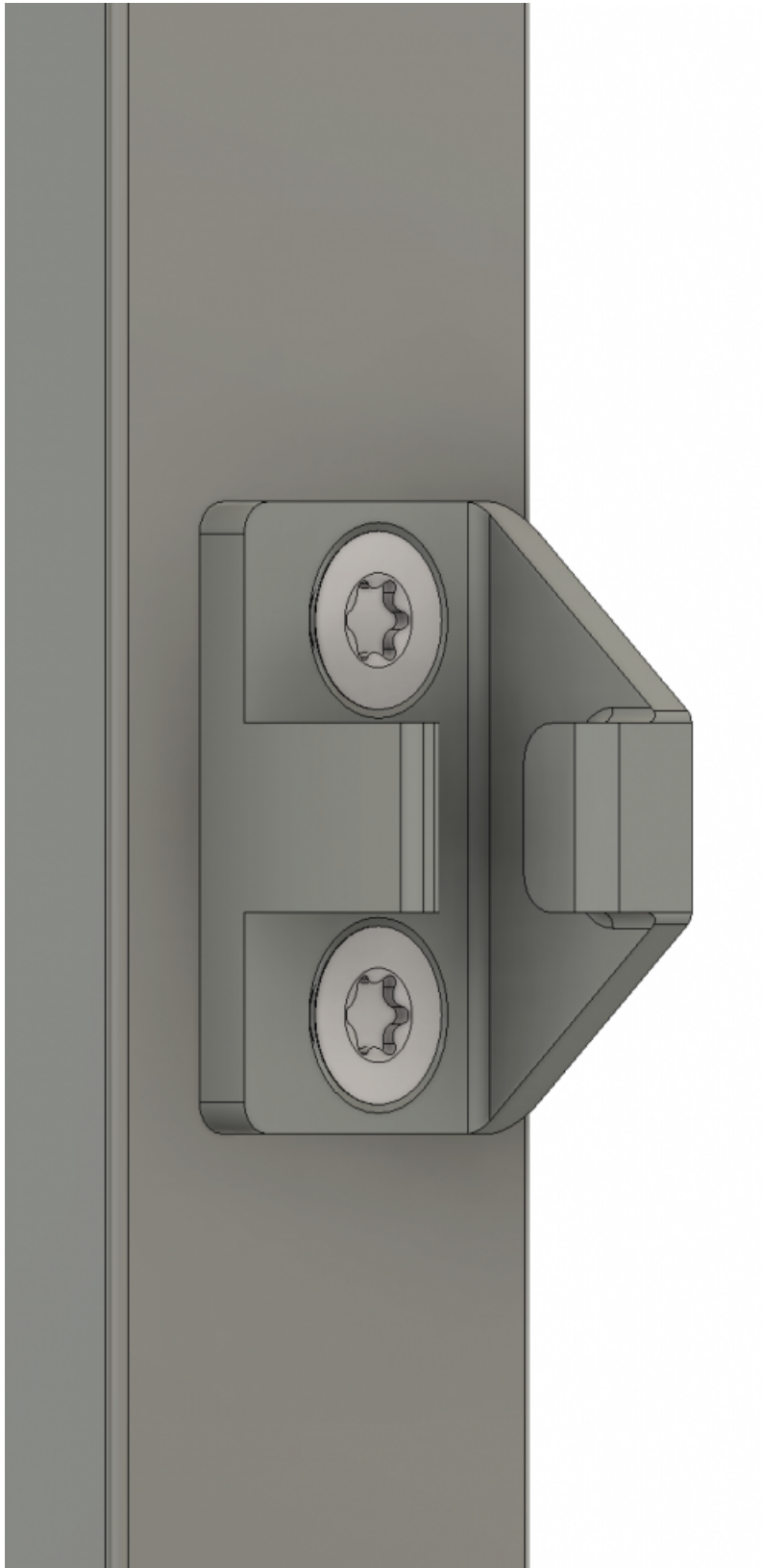
Kentix devices must be checked for functionality as part of annual maintenance.

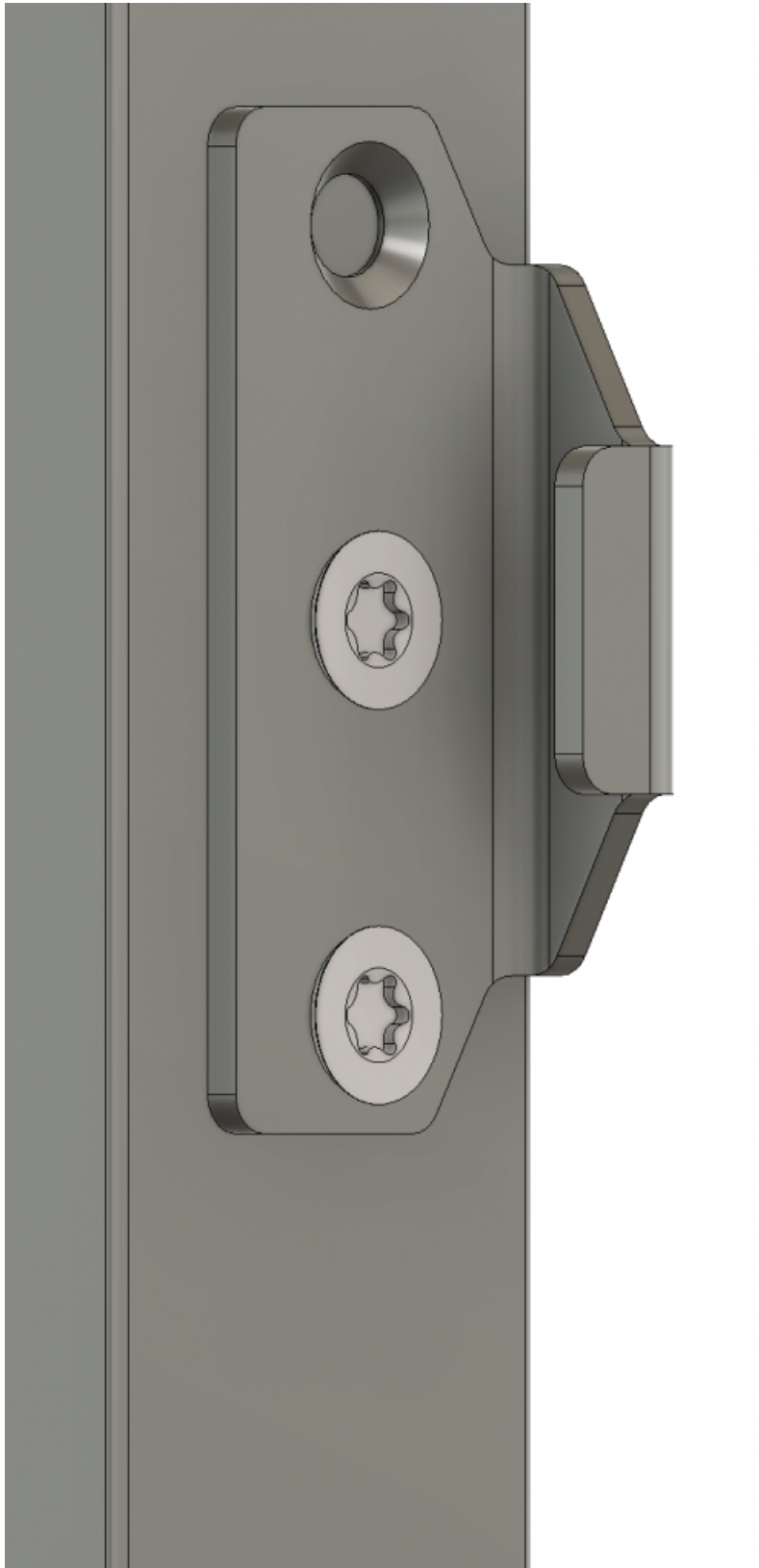
Disposal

Electrical appliances and batteries must be disposed of separately from household waste.

## **Installation**

### **Assembly steps**





1. Unscrew the lock holder
2. Screw on the supplied fasteners

The two upper lock holders are rotated 180° in relation to the two lower lock holders.

### **Tools required**

1. Torx® screwdriver with drive size 30