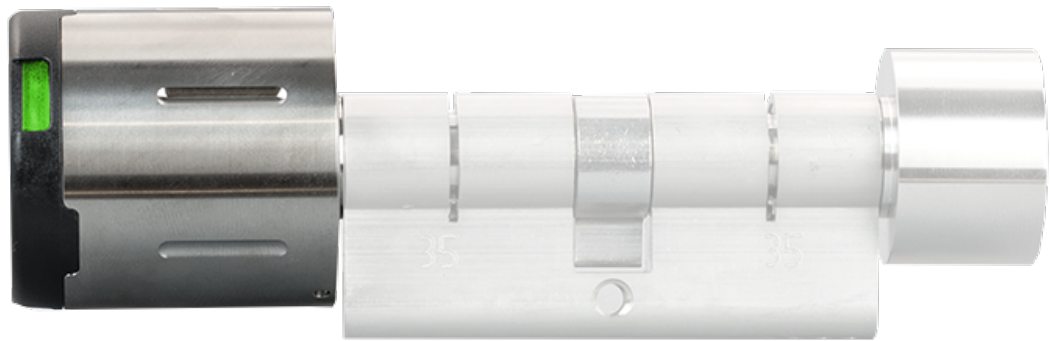


# DoorLock-DC BASIC - DATASHEET



## ORDER-CODES:

KXC-KN1, KXC-KN2, KXC-KN1-BLE, KXC-KN2-BLE

<b>Function</b>	Radio door knob according to DIN15684 with battery supply
<b>Connection possibility</b>	DoorLock AccessManager KXP-16
<b>RFID reader</b>	13.56MHz Mifare Classic, DESfire
<b>Internal signal generator</b>	70dB, 2.3kHz
<b>LED</b>	RED, GREEN
<b>Radio</b>	868MHz, encryption AES 128 bit, radio range up to 25m depending on building structure/environment, up to 16 door knobs per AccessManager
<b>Usage</b>	Interior and exterior doors, depending on type/protection class, suitable for fire and smoke protection doors

<b>Low power opening</b>	Possible by means of external power source
<b>Assembly-disassembly</b>	Via master card set with corresponding authorization
<b>Permanent coupling</b>	Continuous engagement possible without additional power consumption
<b>Power supply</b>	2 x Battery CR2 Lithium (3V)
<b>Battery life</b>	Up to 45,000 actuations depending on operating mode or 4 years
<b>Dimensions knob</b>	KXC-KN1 (IP55): Length = 42.7mm, diam. = 40.0mm KXC-KN2 (IP66): Length = 42.7mm, diam. = 45,0mm
<b>Material</b>	Brass nickel plated, antenna hard plastic
<b>Cylinder lengths</b>	30/30mm to 70/70mm (special lengths up to 200/200mm) Cylinder according to type DIN 18252 or Swiss round cylinder
<b>Operating temperature</b>	Temperature -25°C to 55°C (IP55) Temperature -25°C to 65°C (IP66)
<b>Types</b>	KXC-KN1 (IP55) for indoor/outdoor use without direct weather influence KXC-KN2 (IP66) for outdoor use
<b>Scope of delivery</b>	Radio door knob, batteries (2x CR2)
<b>Accessories</b>	EURO profile cylinder Swiss profile cylinder Low power adapter for emergency power supply
<b>Exams</b>	CE