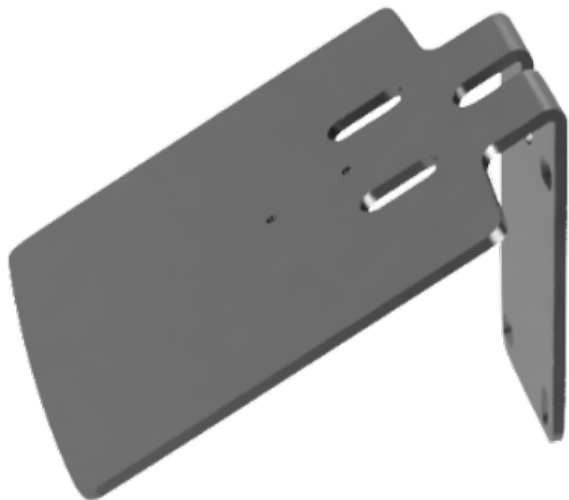


# Montage

The assembly of the Kentix SmartXcan is done in a few steps. All the necessary tools for mounting on a wall are included.

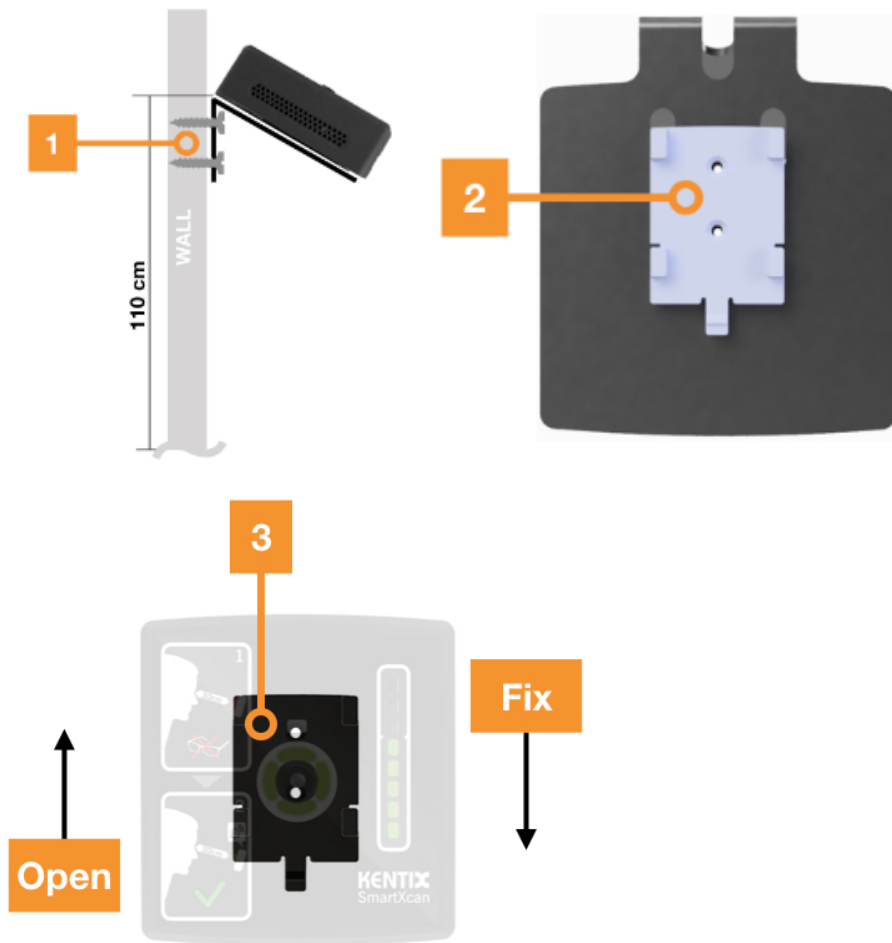
## Wall bracket

[Technical drawing wall bracket SmartXcan](#)



## Assembly and mounting

[Technical drawing mounting bracket](#)

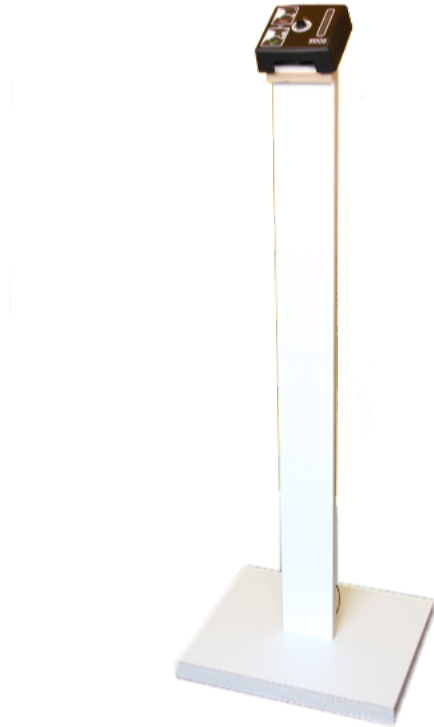


1. The wall bracket is attached to the wall at a height of 110 cm
  2. The SmartXcan mounting bracket is attached to the wall bracket
  3. The Kentix SmartXcan is fixed on the mounting bracket
- Open: For disassembly, the tab must be pressed down with a screwdriver, pin, etc. Only then can the SmartXcan be removed upwards.  
 Fix: To mount the SmartXcan on the mounting bracket, the device is placed on the appropriate tabs of the mounting bracket and fixed by pushing the SmartXcan downwards.

## Stand

To place the SmartXcan in a free space the Kentix SmartXcan stand can be used. The stand is 110 cm high. The SmartXcan mounted on it is inclined at 60°. This height and tilt allows both smaller people and larger ones to easily measure temperature and maintain the required measuring distance.

[Technical drawing SmartXcan Stand](#) (subject to modifications!)



#### Mounting instruction Stand

The shaft of the stand is attached to the base plate with three 4.5 X 70mm, Pozidriv PZ2 screws.

[SmartXcan Stand](#)

